

Special for bodywork

# XPECTRA 6600 Clear

**GAHESA**  
**JAFE**

The highest finishes  
Special for the most demanding AUTOMOTIVE, WOOD AND INDUSTRY sectors

## EAN Code

Nozzle 1.20 - 8432615163580

Nozzle 1.30 - 8432615162033

Nozzle 1.40 - 8432615163016

Nozzle 1.50 - 8432615163597

Model: XPECTRA 6600 Clear

Ref.: 036600CXXX

## Spray technology:

**New NT Fluid Tip (no turbulence)** - it ensures an even air distribution without turbulences. **MAX TECHNOLOGY** - it can be found on the outside of the spray head.

**DUO SYSTEM** - It provides an air stability that was not possible before and the total transition control from fan to jet with full uniformity.

## Technical advantages:

1. The combination of the NT system in the fluid tip and the DUO MAX system in the nozzle allows achieving perfect finishes in aqueous bases and an extraordinary finish quality in varnishes.
2. Our technology allows a **saving of air consumption of more than 15%** compared to other brands and a **paint consumption of approximately 10%**.
3. Classy and comfortable, the design of the new trigger designed in duralumin guaranteeing a perfect and easy application without adding more weight to the gun will surprise you.
4. Elegant body with an excellent chrome finish. Its ergonomic body in three dimensions is noticed as soon as you hold it and it is appreciated during its use.
5. High precision airflow regulator.
6. The product regulator has a special marking to keep track of turns.
7. The fan regulator located just above the product regulator allows regulating the amplitude of the fan with great precision.

## Technical Characteristics:

Standard nozzle:	1.30
Available nozzles:	1.20, <b>1.30</b> , 1.40 & 1.50
Pollution level:	Low
Max. inlet air pressure:	2.2 to 2.4 bar
Air consumption:	265 a 320 l./min.
Air inlet:	1/4 M
Tank capacity:	600 cc. nylon
Recommended compressor:	3 CV.
Supply system:	Gravite
Net weight with the tank:	520 grs.

\* These technical data are indicative and can be changed without prior notice, if we consider it an improvement.



## Packaging:

- **Cardboard box** Dimensions: 136 x 136 x 230 mm.  
Gross weight: 965 grs.



## Contents:

- XPECTRA 6600 Clear
- 750 cc Non-drip nylon tank ref. 501073
- Paint filter ref. 502471
- Wrench ref. 50140
- Cleaning brush ref. 50300
- Pneumatic connector CR1/4H
- Instruction manual ref. 810603022

- **Complete set presentation** - Polypropylene case with closing tabs and a foam mold inside



\* See combination chart on the next page

## Accessories:

**Gravity tank** ref. 501073

Capacity: 600 cc Non-drip system. Paint filter ref. 50247. Nylon. Thread H16x1.5h



**Gravity filter** ref. 50247

10 pieces box



**Air connection hose** ref. 51011-X In lengths from 5 to 50 m. with a C-8 adapter on one side and an J-9 plug on the other



**Cleaning brush** ref. 50300

Bag of 2 pieces

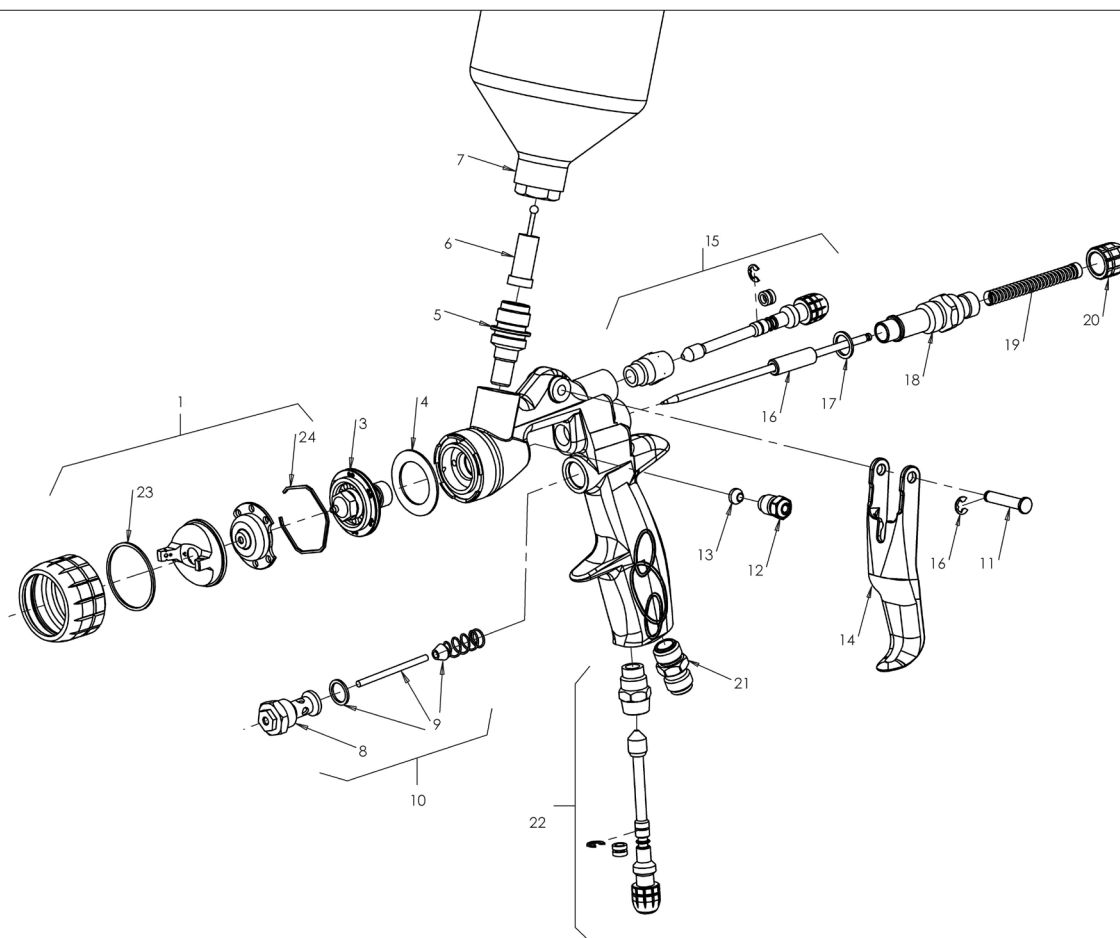


**Complete kit** ref. 50089 XXX NT

It includes a fluid tip, a needle (ref. 50551) and a nozzle (ref. 50035) in a polypropylene case



Continues on the following page



No.	REFERENCE	DESCRIPTION
1	505942	<b>Clear</b> nozzle set
3	50481XXX	NT fluid tip in inox
4	501691B	Joint, 1 unit
5	50585B	Product inlet fitting in inox
6	502471B	Filter, 1 unit
7	501073B	Tank with fitting in inox
8	50015B	Valve
9	50016	Valve closing
10	50017	Valve kit
11	50586B	Stud bolt in inox
12	501871B	Packing nut, 1 unit
13	500191B	Packing, 1 unit
14	50589B	Bodywork trigger
15	505922	<b>Clear</b> fan regulator kit
16	5058027NTB	Needle 27 NT
17	500111B	Joint, 1 unit
18	50577B	Bushing
19	50593	Product spring + Support
20	505781B	<b>Clear</b> product regulator
21	50582B	Air inlet fitting in inox
22	505842	<b>Clear</b> air regulator kit
23	50570B	Nozzle nut joint, 5 units
24	50568B	Nozzle nut spring, 2 units

COMPLETE SET	FLUID TIP+NEEDLE	MAX NOZZLE
50562 120	50557 120	505942
50562 130	50557 130	
50562 140	50557 140	
50562 150	50557 150	

Aerográficos GAHE, S.A.  
 Avda. Comunidad Europea, 83  
 34190 Villamuriel de Cerrato  
 Palencia - Spain  
 Tel.: (+34) 979 761 020  
 e-mail: export@gahesa.com

www.gahesa.com