



Decoration

MP 18 Gota
MP 18 Lisos


Aerográficos GAHE, S.A.
Parque Industrial de Villamuriel
Avda. Comunidad Europea nº 83
34190 Villamuriel de Cerrato
Palencia - Spain

Tel. + 34 979 761020

INDEX*MP-18 Lisos and MP-18 Gota*

1. DEAR CLIENT	04
2. SAFETY RULES	05
3. PACKAGING	05
4. WASTE AND ENVIRONMENT	05
5. INSPECTION AT RECEPTION	05
6. IDENTIFICATION DATA	06
7. REQUIRED INSTALLATION	07
8. FEATURES	07
8.1 PRODUCTS THAT CAN BE SPRAYED	08
9. ACCESSORIES	08
9.1 STANDARD ACCESSORIES AND DOCUMENTATION	08
9.2 OPTIONAL ACCESSORIES	08
10. WORKING DESCRIPTION	10
11. MAINTENANCE AND CLEANING	10
12. TROUBLESHOOTING	11
13. EXPLODED VIEWS	12
13.1 MP-18 LISOS GOTA EXPLODED VIEW	12
14. WARRANTY	13
15. WARRANTY CERTIFICATE	15

Dear Client

First of all, we would like to thank you for the trust placed in us by acquiring one of our  products, which we hope will meet your expectations..

Aerográficos GAHE, S.A. is the benchmark for many painting professionals. Our company is young, familiar and dynamic but has great experience. Founded in 1973, it has developed and adapted during these years in order to offer a better service to its clients every day.

All the components of this product have passed strict quality controls to guarantee the highest performance, so we recommend that you use original spare parts.

Aerográficos GAHE, S.A., has prepared this user and maintenance guide as a document that is also part of the machine, so it has to be kept throughout its useful life. The user and maintenance staff must always have this manual in mind.

The Management



2. SAFETY RULES

A misuse of this equipment may result in accidents, damage or malfunctioning. Read the following instructions carefully.

Bear in mind the following rules:

- Make sure the person in charge of using the equipment is qualified to do so.
- Shut down the equipment for any operation, including cleaning, and decompress the circuits by pulling the trigger.
- Always use the equipment with approved protections (gloves, protective mask, earplugs and proper clothing). The place where the device is used must be well-ventilated and equipped with an air extraction system (paint booth) and there should not be direct exposure to flames (cigarettes, lamps...) while working.
- Keep the working area clean and without waste (rugs, solvents...).
- Check the chemical compatibility of the products to be used.
- Do not exceed the indicated maximum pressures.
- Do not use worn, folded, broken or leaking hoses.
- Do not aim at people or animals.
- This equipment is not for children.
- Do not use the product for those operations the machine has not been designed for.
- The use of halogenated hydrocarbon products can cause explosions from chemical reactions; that is why products containing those elements are forbidden.



3. PACKAGING

The decoration guns of the MP-18 range are presented in a cardboard box. All its standard accessories are inside the packaging.

During delivery and storage the equipment must have a temperature between 0° and 50° C (32 and 122 °F), and non-excessive humidity.



Model	Measures	Weight
MP-18 Lisos	260 x 158 x 44 mm.	875 gr.
MP-18 Gota	260 x 158 x 44 mm.	870 gr.

4. WASTE AND ENVIRONMENT



REMEMBER:

To get rid of polluting and dangerous products, packaging, disused equipment and tools and any type of waste produced by its activity in general, please use the suitable waste sorting and treatment point for each case.

If you need any information related to this, please go to the Ministry of the Environment in your regional government or the nearest city hall.

5. INSPECTION AT RECEPTION

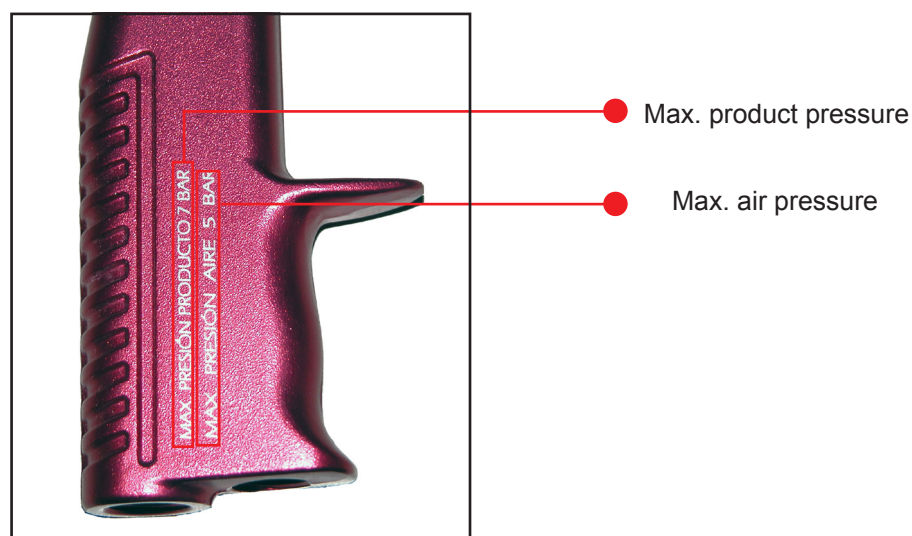
Before using this equipment the user must make sure that it has not been damaged during delivery or storage. Moreover, it must be checked that all the components of the equipment are in the packaging.

6. IDENTIFICATION DATA

The gun has the brand of the manufacturer, the model, the CE mark and its serial number on one of the sides.



On the other side, the maximum pressure is shown, both the max. product pressure and the max. air pressure.



7. REQUIRED INSTALLATION

It is advisable to always use dry, oil-free compressed air for better paint results.
Before proceeding with the installation, it is necessary to carry out some inspections:



NOTES:

- Check the hoses are in good condition (no cracks or folds).
- Check the air purifying filter of the supply is not full of water. Due to the fact that if it does not have an automatic purge, its emptying is not automatic either, so it is advisable to carry out emptying operations regularly.

A compressor (minimum 2 CV) or a compressed air line connected to the gun or the pressure tank is required to complete the installation.

In these models, since they are pressured, a pressure tank is required to supply paint to the gun.
Before connecting the gun to the compressor, close all the gun regulators (no.5, no.10 & no.18) and prepare the product to be used following the manufacturer's instructions.

From the compressor comes an air hose connected to the pump or the pressure tank, and from this latter equipment comes the product hose that is connected to the gun through the fitting (no.20) and an air hose that goes in the adaptor (no.19).

Regulate the product pressure according to the pump or pressure tank instructions, and the gun maximum pressure (max. inlet pressure - 5 bar) and the spraying air pressure until you achieve the appropriate pattern.

8. FEATURES

The MP-18 decoration range is designed for guaranteeing a high-finished and a great application speed.
Aerográficos GAHE, S.A. tests all its guns before they leave the facilities, assuring this way optimal operation.

Technical Data	MP-18 Lisos	MP-18 Gota
Min. compressor	2 cv	2 cv
Available nozzles	See combination chart	See combination chart
Body	Forged and anodized aluminum	Forged and anodized aluminum
Finishing quality	High	High
Pollution level	Low	Low
Max. inlet air pressure	5 bar (72 psi)	5 bar (72 psi)
Max. working temperature	50°	50°
Weight	670 gr	665 gr
Air inlet	Thread ¼ M	Thread ¼ M
Air inlet diameter	8 mm	8 mm
Product supply	Pressure	Pressure
Product inlet diameter	19 mm.	19 mm.

The technical data are indicative and can be changed without prior notice, if an improvement of the product is considered with it.

8.1. PRODUCTS THAT CAN BE SPRAYED

- The model MP-18 Lisos is a gun designed and recommended for spraying plastic paints .
- The model MP-18 Gota is a gun designed and recommended for spraying stippled-finish paints or gotele.

9. ACCESSORIES

9.1. STANDARD ACCESSORIES



Aerográficos GAHE, S.A. delivers the gun with the following accessories and documentation:

- WRENCH TO ASSEMBLE AND DISASSEMBLE THE GUN.
- PIN TO HOSE.
- USER AND MAINTENANCE GUIDE.
- WARRANTY CERTIFICATE.

9.2. OPTIONAL ACCESSORIES

Aerográficos GAHE, S.A. offers a wide range of optional accessories:

- *COMBINATION CHART* Ref. 50129XXX, 50128XXX (substitute the XXX by the nozzle size)

LISOS

COMPLETE KIT	FLUID TIP + NEEDLE	NOZZLE
50129-1.78	50561-1,78	5011460B
50129-2.18	50561-2,18	5011461B
50129-2.90	50561-2,90	5011910B

GOTA

COMPLETE KIT	FLUID TIP + NEEDLE	NOZZLE
50128-2.18	50561-2,18	5011822B
50128-2.90	50561-2,90	5011821B
50128-3.20	50561-3,20	5011820B
50128-4.00	50561-4,00	5011825B

- *HOSES*



Ref. 55203 y 55201

PRODUCT HOSE 5 m.
AIR HOSE 5 m.

Ref. 55203

Ref. 55201

FURTHER INFORMATION
about all these products
can be found in the General
Catalog



3. Gota Full Equipment.

Our Gota equipment includes a pressure tank, a special idle compressor, a pressure gun a **MP -18** or a **MP -22** and a hose set.

GOTA FULL EQUIPMENT with a MP 18 gun

See our general catalogue

		A		B		C		D		E		F	
		DECO PRO 2/30		DECOPROAUTO 2/30		DECO 2/25		DECO 3/25		DECO 3/25 PLUS		POWER 3/25 V	
1	DECO 30 INOX	12EQUIPO	1A	12EQUIPO	1B	12EQUIPO	1C	12EQUIPO	1D	12EQUIPO	1E	12EQUIPO	1F
2	DECO 60	12EQUIPO	2A	12EQUIPO	2B	12EQUIPO	2C	12EQUIPO	2D	12EQUIPO	2E	12EQUIPO	2F
4	DECO 30	12EQUIPO	4A	12EQUIPO	4B	12EQUIPO	4C	12EQUIPO	4D	12EQUIPO	4E	12EQUIPO	4F
5	DECO 20	12EQUIPO	5A	12EQUIPO	5B	12EQUIPO	5C	12EQUIPO	5D	12EQUIPO	5E	12EQUIPO	5F

SPECIAL REPAINTING FULL EQUIPMENT with MP 18 gun

See our general catalogue

		A		B	
		AIRHome 25		ECO 25	
15	DECO 10 INOX «VALRI»	12EQUIPO	15A	12EQUIPO	15B

10. WORKING DESCRIPTION

1. Close the gun regulators (no.5, no.10 & no.18).
2. Prepare the product to be sprayed (according to the manufacturer instructions) and fill in the pressure tank.
3. Regulate the minimum working pressure on the pressure tank.
4. Loose the product regulator (no.10), point the gun at a paint pit or a test surface and pull the trigger until the paint comes out.
5. Regulate the air inlet pressure of the regulator (no.18) until you achieve the desired flow rate.
6. Adjust the fan width (no.5).



NOTES:

- Always use the gun in a perpendicular position to the area to be painted.
- Avoid working only with the wrist.
- Do not forget that cross coats does not cover regularly.
- Spraying with an immobile gun causes a local overload. Therefore, do not pull the trigger before starting to move your arm, and do not release it before finishing the movement.
- You should try to get a spraying with regular and constant thickness between the different coats.

11. MAINTENANCE AND CLEANING

MAINTENANCE

The ordinary maintenance of the gun is very simple as it does not require any special operation. To ensure the proper functioning, you only have to clean the paint circuit after finishing the activity.
A recommendation for the product to last longer is to use well filtered paints and avoid paints which block the nozzle easily.

CLEANING

1. Depressurize the painting equipment by pulling the trigger of the gun.
2. Substitute the paint by solvent.
3. Pressurize the painting equipment.
4. Regulate the minimum working pressure (regulate the air at 1 bar - 14 psi).
5. Pull the trigger until the whole circuit is completely clean.
6. Depressurize the painting equipment (pulling the trigger of the gun).
7. Clean the nozzle.
8. Clean the body of the gun with a cloth.
9. Lubricate all the moving parts.
10. Fully close the product regulator (no.5, no.10 & no.18).







CLEANING NOTES:

- If the cleaning is done in an industrial washing machine for spray guns, the air and product regulator have to be closed (so that the solvent does not damage the joints). Dry the gun with a blowing gun once the cleaning cycle has finished.
- Do not use metallic brushes for cleaning.
- Never sink the gun into solvent.

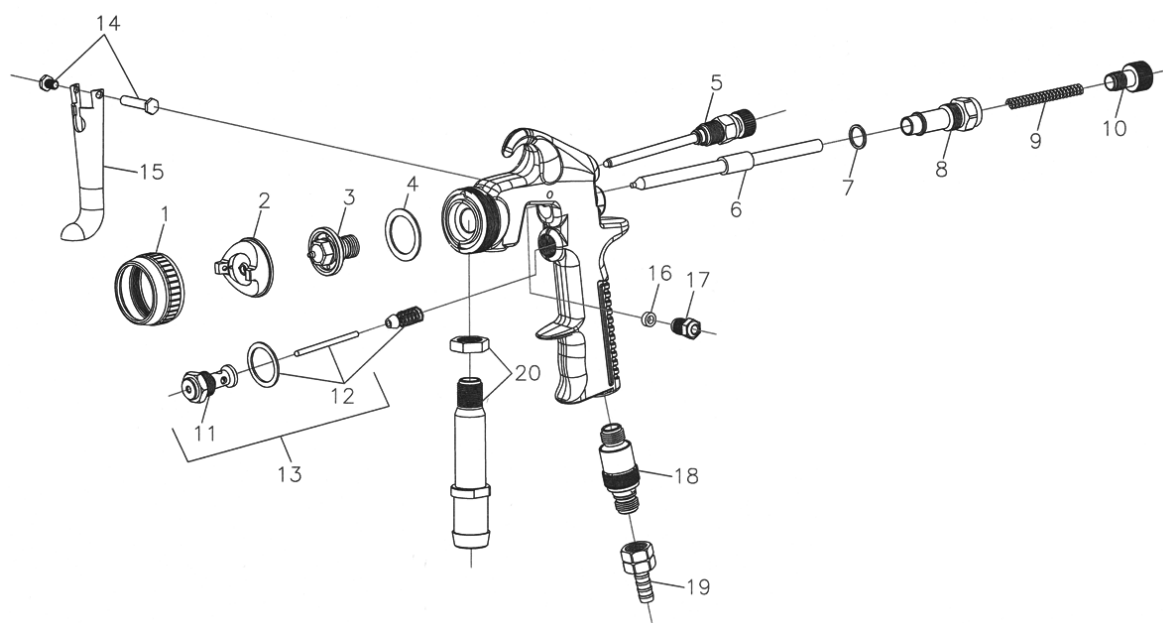
12. TROUBLESHOOTING

A table with incidents that the user can solve himself is shown below:

CONDITION		POSSIBLE CAUSE	SOLUTION
I	No spraying	a. No pressure in the gun	Check the air and product hoses
		b. Bad regulated flow regulator	Regulate it
II	Incorrect spraying	a. Bad regulated spray gun	Correct it
III	 Pattern shape	Blocked nozzle	Clean the nozzle
IV	 Pattern shape		
V	 Pattern shape	Too thick or too much material	Dilute or reduce the amount of material
VI	 Pattern shape	Little material	Reduce the air pressure or increase the product flow
VII	Intermittent spraying	a. Not enough material in the tank or blocked duct	Fill the tank or check/clean the hose
		b. Blocked gun material duct	Clean the gun ducts
		c. Worn packing seal or loose packing screw	Change or tighten the packing seal
		d. Damaged or loose fluid tip	Change or tighten the fluid tip
VIII	Fluid loss through the packing screw	a. Loose packing screw	Tighten, check the needle to make sure there is no movement
		b. Dry packing seal	Lubricate the packing seal
		c. Worn packing seal	Change the packing seal
IX	Leaking fluid tip	a. Dry packing seal	Lubricate the packing seal
		b. Blocked needle	Lubricate the needle
		c. Packing screw too tightened	Too tightened packing screw
		d. Worn nozzle	Change the fluid tip

13. EXPLODED VIEW

13.1 MP-18 Lisos y Gota Exploded View



MP-18 Lisos and Gota Exploded View (rev 1)

No.	Ref.	Description
1	501461B	Nozzle nut for the smooth products gun
1	50001B	Nozzle nut for the gotele gun
2	50118XXB	Gotele nozzle (see combination table)
2	502134B	Smooth products nozzle (see combination table)
2	5011926	Smooth products nozzle (see combination table)
2	5011960	Smooth products nozzle (see combination table)
2	5011961	Smooth products nozzle (see combination table)
3+6	50561XXX	Fluid tip + needle (see combination table)
4	500041B	Joint, 1 unit
5	50174B	Fan regulator kit
7	500111B	Joint, 1 unit
8	50012B	Bushing
9	501221B	Spring, 1 unit
10	500141B	Product regulator, 1 unit
11	50069B	Valve
12	50016	Air closing valve
13	50070	Complete valve
14	50241B	Screw and stud
15	50123B	Trigger
16	501301B	Packing, 1 unit
17	501311B	Packing nut, 1 unit
18	50022B	Air flow regulator
19	50112	Nut and pin
20	50132B	Product inlet fitting
	50128XXX	Complete gotele kit (see combination table)
	50129XXX	Complete smooth products kit
	50546	Joints kit MP-18

14. WARRANTY

This equipment is covered with a 2-year warranty from the date of purchase. The guarantee covers against manufacturing faults and components defects.

Only repairs and elements substitution carried out by technical staff of Aerográficos GAHE, S.A. are covered.

Faulty pieces will be sent carriage paid.

Warranty does not cover:

- Faults or damages caused by improper use of the equipment.
- Faults or damages caused by the use of spare parts different from the original JAFE ones or those recommended by Aerográficos GAHE, S.A.
- Faults or damages caused by bad maintenance.
- Components subject to wear (nozzles, filters, etc.).

Warranty is void:

- Whenever repairing operations or components substitutions are carried out without prior authorization of Aerográficos GAHE, S.A.
- Whenever the serial number is removed or manipulated.
- Whenever it is checked that the fault has been caused by improper use or if the equipment falls, is bumped or by other causes not due to normal working conditions.

All repairing interventions carried out under warranty will not entail a stoppage or extension of the warranty period.

✂-----✂
Cut along the dotted line

Model: *MP-18*.....

Date of Purchase:

Serial number:

Purchaser:.....

Address:

City:

Distributor stamp:



Aerográficos GAHE, S.A.
Parque Industrial de Villamuriel
Avda Comunidad Europea, 83
34190 Villamuriel de Cerrato
Palencia - Spain

Tel. + 34 979 761020