

EAN Code - 8432615129081

Mod.: IBERA 260 PROMIX

Ref.: 02IBERA260

The best spray quality and better fan control on the market. It offers perfect pulverization at high pressures and it is possible to paint up to 260 bar. 80% of fog reduction - 40% material saving. The material in contact with the product is 100% inox. The trigger is made of inox too: EXTRA SOFT system - "The softest on the market". Trigger safety lock. Its carbide tip of the product nozzle is compatible with those from the main manufacturers.

Air consumption at 1.5 bar: 120 l/m. max. fan

Air consumption at 1.5 bar: 188 l/m. min. fan

Applications: Finish: standard. Solvent paints: recommended. Water paints: suitable. Wood: lacquered, varnished, and anchored. Bodywork: anchored and finished commercial vehicle. Metal: primers and enamels.

Max. pressure 260 bar

Technical Characteristics:

Finish quality:	Very high
Pollution level:	Low
Max. product pressure:	260 bar
Max. working temperature:	50°
Minimum compressor:	1,5 cv
Weight:	575 gr.
Air inlet:	1/4" GAS
Supply system:	1/4" GAS

* The technical data are indicative and can be changed without prior notice, if we consider it an improvement of the product.

PROMIX SYSTEM: Ibera 260 PROMIX

This innovative system guarantees the best painting solution on the market. While other systems are thought to be enough because they offer good finishes at low pressures, the PROMIX system can improve those finishes and take them to pressures never reached before. Around 80% of fog is reduced, saving approximately 40% of paint. All types of materials regardless of their viscosity can be sprayed with this system, the pressure only needs to be raised and the PROMIX system will do the rest.



Packaging:

- Polypropylene case with closure tabs and a foam mold inside.
- Dimensions: 250 x 70 x 210 mm.
Gross weight: 1,082 grs.

Contents:

- Ibera 260 PROMIX GAHESA Nozzle + STAN-DARD nozzle
- Filter 100 mesh ref. 50191
- Wrench ref. 50140
- Cleaning brush ref. 50300
- Instruction manual ref. 810602005



Accessories:

Connection hose both for product and air

Twin and sealed hose

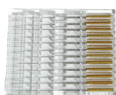
Mix Equipment AIR + PRODUCT



REFERENCE	METERS	NOZZLE	RACCORD	PRESSURE
1651204005	5	3/16	1/4"	235 bar
1651204007	7.5	3/16	1/4"	235 bar
1651204015	15	3/16	1/4"	235 bar

Case with cleaning tips. 12 units.

Ref. 16J28000



Accessories:

Product nozzle ref. 50179XXX



		SIZE						
Measures (cm)		007"	009"	011"	013"	015"	017"	019"
FAN WIDTH	10	0720	0920	1120	1320			
	15		0930	1130	1330			
	20	0740	0940	1140	1340	1540	1740	1940
	25		0950	1150		1550		
	30		0960	1160	1360	1560		1960
	35		0970	1170		1570	1770	
	40					1580	1780	1980
	45				1390			

Plate filter

Ref. 501911 - 60 mesh

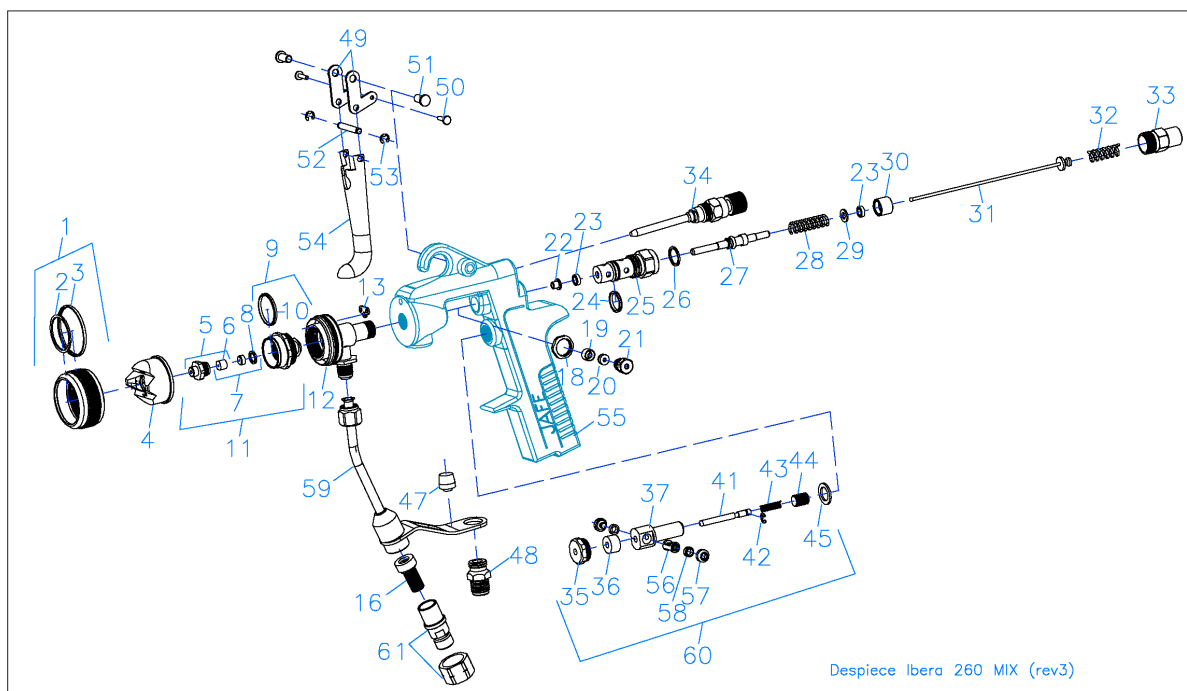
Ref. 501911 - 100 mesh

Ref. 501912 - 200 mesh

100 mesh Micro filter for mix nozzles

Ref. 50179filtro





No.	REFERENCE	DESCRIPTION
1	50313B	Nozzle
2	50267B	Joint
3	50314B	Sealing ring
4	50435B	Ibera 260 nozzle type 1
4	50435KB	Ibera 260 nozzle type 2
5	50441	Stud holder + joint
6	50309B	Stud joint
7	50306B	Carbide stud
8	50307B	Joint
9	50304B	Fluid tip body
10	50308B	Nozzle - fluid tip outer joint
11	50483	Fluid tip
12	50310B	Head with product inlet fitting
13	50363B	Air duct joint
15	50360B	Product inlet fastening plate
16	50191	Filter with joint
18	50312B	Head fixing nut
19	50317B	Packing
20	50316B	Product needle pusher
21	50315B	Packing nut screw
22	50350B	Trigger pusher cap
23	50322B	Retainer, 2 units
24	50319B	Bushing outer joint
25	50318B	Bushing
26	500111B	Bushing inner joint, 1 unit
27	50440	Air valve kit
28	50324B	Air spring
29	50323B	Bushing washer
30	50321B	Bushing stud holder

No.	REFERENCE	DESCRIPTION
31	50329B	Product needle
32	50087B	Product spring
33	50320B	Bushing cap
34	502356B	Fan regulator set
35	50339B	Locking cap
36	50340B	Teflon locking cap
37	50341B	Locking body
41	50347B	Locking body guide rod
42	50399	Seeger ring, 2 units
43	50344B	Locking body spring
44	50345B	Back cap
45	50338B	Locking closure joint
47	50337B	Holder block
48	50356B	Air inlet connection
49	50361B	Trigger base
50	50359B	Small rivet, 2 units
51	50358B	Large rivet, 2 units
52+53	50430	Stud bolt + 2 Seeger rings
54	50362B	Trigger
55	50301	Gun body
56	50492B	Locking bolt
57	50493B	Locking body button, 2 units
58	50494B	Ring, 2 units
59	50490B	Product inlet tube
60	50495	Locking set
61	50491B	Filter holder
	50545	Joints kit