

EAN Code - 8432615167243

Mod.: IBERA 180 PROMIX  
Ref.: 02IBERA180PROMIX

Air nozzle with high quality finishes. Trigger lock with a very smooth activation. It includes the Extra soft System and has a carbide ball needle with carbide stud closure. The trigger is 100% inox. The product inlet tube is made of nickel-plated brass. Its body is stamped and anodized in blue.

**Air consumption at 1.5 bar: 120 l./m. max. fan**

**Air consumption at 1.5 bar: 188 l./m. min. fan**

**Applications:** Finish: standard. Solvent paints: recommended. Water paints: suitable. Wood: lacquered, varnished, and anchored. Bodywork: anchored and finished commercial vehicle. Metal: primers and enamels.

#### Technical Characteristics:

Finish quality:	High
Pollution level:	Low
Max. product pressure:	180 bar
Max. working temperature:	50°
Minimum compressor:	1.5 CV
Weight:	Around 620 gr.
Air inlet:	1/4" M GAS
Supply system:	Pressure

\*The technical data are indicative and can be changed without prior notice, if we consider it an improvement of the product.

#### PROMIX SYSTEM: Ibera 180 PROMix

This innovative system guarantees the best painting solution on the market. While other systems are thought to be enough because they offer good finishes at low pressures, the PROMIX system can improve those finishes and take them to pressures never reached before. Around 80% of fog is reduced, saving approximately 40% of paint. All types of materials regardless of their viscosity can be sprayed with this system, the pressure only needs to be raised and the PROMIX system will do the rest.



#### Packaging:

- **Polypropylene case** with closure tabs and a foam mold inside.  
Dimensions: 250 x 70 x 210 mm.  
Gross weight: 1,100 grs.

#### Contents:

- Ibera 180 PROMIX
- Filter 100 mesh ref. 50191
- Wrench ref. 50140
- Cleaning brush ref. 50300
- Instruction manual
- Product nozzle not included



#### Accessories:

**Connection hose both for product and air**

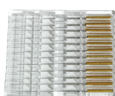
**Twin and sealed hose**

**Mix Equipment AIR + PRODUCT**



REFERENCE	METERS	NOZZLE	RACCORD	PRESSURE
1651204005	5	3/16	1/4"	235 bar
1651204007	7.5	3/16	1/4"	235 bar
1651204015	15	3/16	1/4"	235 bar

**Case with cleaning tips. 12 units.**  
Ref. 16J28000



#### Accessories:

**Product Nozzle** ref. 50179XXX



		SIZE						
Measures (cm)		007"	009"	011"	013"	015"	017"	019"
FAN WIDTH	10	0720	0920	1120	1320			
	15		0930	1130	1330			
	20	0740	0940	1140	1340	1540	1740	1940
	25		0950	1150		1550		
	30		0960	1160	1360	1560		1960
	35		0970	1170		1570	1770	
	40					1580	1780	1980
	45				1390			

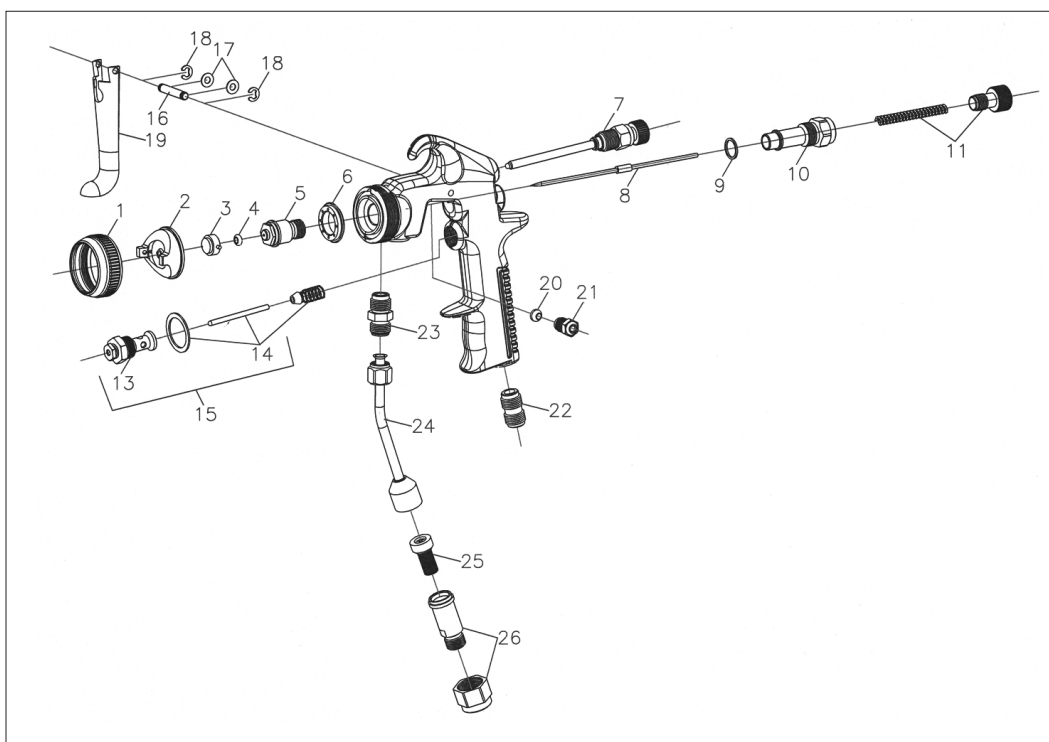
#### Plate filter

Ref. 501911 - 60 mesh  
Ref. 501911 - 100 mesh  
Ref. 501912 - 200 mesh



**100 mesh Micro filter for mix nozzles**  
Ref. 50179filtro





No.	Reference	Description
1	50566B	Nozzle nut
2	50435B	Nozzle
3	50179XXX	Product nozzle
4	501801B	Packing, 1 unit
5	50438B	Fluid tip
6	50535B	Air distributor
7	50174MIXB	Fan regulation set
8	50612B	Needle
9	500111B	Joint, 1 unit
10	50012B	Bushing
11	50195	Spring and product regulator
13	50015B	Valve
14	50016	Valve closing
15	50017	Valve kit
16+18	50430	Stud bolt + 2 Seeger rings
17	50428B	Trigger joints
19	50427B	Trigger
20	501861B	Packing, 1 unit
21	501871B	Packing nut, 1 unit
22	50111B	Air inlet connection
23	50188B	Product inlet fitting
24	50189B	Product inlet tube
25	50191	Filter
26	50085	Nut and filter holder fitting
	50544	Joints kit

Aerográficos GAHE, S.A.  
Avda. Comunidad Europea, 83  
34190 Villamuriel de Cerrato  
Palencia - Spain

Tel.: (+34) 979 761 020  
e-mail: export@gahesa.com

www.gahesa.com