

EAN Code - 8432615138076

Mod.: IBERA 130 MIX

Ref.: 02IBERA130

The body is new and more ergonomic, stamped and anodized in red. Tip and needle 100% Inox. Trigger lock included. The trigger is 100% inox with a very smooth activation. The product inlet tube is made of nickel-plated brass.

**Air consumption at 1.5 bar: 74 l./m. max. fan**

**Air consumption at 1.5 bar: 154 l./m. min. fan**

**Applications:** Finish: standard. Solvent paints: recommended. Water paints: suitable. Wood: lacquered, varnished, and pre-treatments. Bodywork: pre-treatments and finished commercial vehicle. Metal: primers and enamels.

#### Technical Characteristics:

Pollution level:	Low
Max. product pressure:	130 bar
Max. working temperature:	50°
Minimum compressor:	1.5 CV
Weight:	600 Ggr.
Air inlet:	1/4" GAS
Supply system:	Pressure

\*The technical data are indicative and can be changed without prior notice, if we consider it an improvement of the product.

**MIX SYSTEM: Ibera 130 mix** - Standard spray that combines the best part of the aerographic system with the best part of the airless system. This system has a high transfer rate around 75 % with minimum air consumption. The MIXED system achieves its best performance in the range of pressures from 50 to 170 bar.



#### Packaging:

**- Cardboard box** Dimensions: 44 x 158 x 260 mm.  
Gross weight: 820 grs.

#### Contents:

- Ibera 130 mix
- Filter 100 mesh ref. 50191
- Wrench ref. 50140
- Cleaning brush ref. 50300
- Instruction manual ref. 810602005
- Product nozzle not included



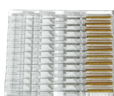
#### Accessories:

**Connection hose both for product and air**  
**Twin and sealed hose**  
**Mix Equipment AIR + PRODUCT**



REFERENCE	METERS	NOZZLE	RACCORD	PRESSURE
1651204005	5	3/16	1/4"	235 bar
1651204007	7.5	3/16	1/4"	235 bar
1651204015	15	3/16	1/4"	235 bar

**Case with cleaning tips. 12 units**  
Ref. 16J28000



#### Accessories:

**Product nozzle** ref. 50179XXX



		SIZE						
Measures (cm)		007"	009"	011"	013"	015"	017"	019"
FAN WIDTH	10	0720	0920	1120	1320			
	15		0930	1130	1330			
	20	0740	0940	1140	1340	1540	1740	1940
	25		0950	1150		1550		
	30		0960	1160	1360	1560		1960
	35		0970	1170		1570	1770	
	40					1580	1780	1980
	45				1390			

#### Plate filter

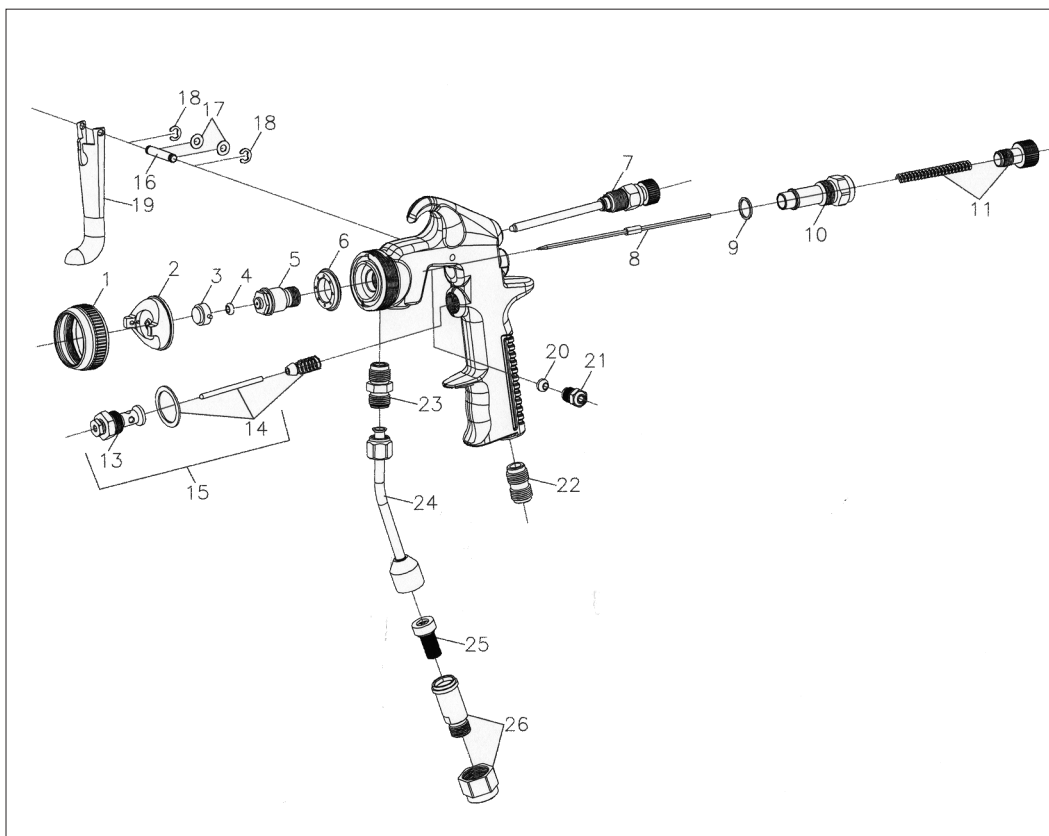
Ref. 501911 - 60 mesh  
Ref. 501911 - 100 mesh  
Ref. 501912 - 200 mesh



**100 mesh Micro filter for mix nozzles**  
Ref. 50179filtro



The **reinforced needle** for the model Ibera 130 mix made of hard metal lengthens the life of your gun (ref. 5019310B).



No.	REFERENCE	DESCRIPTION
1	501461B	Nozzle nut
2	50178B	Nozzle
3	50179XXX	Product nozzle
4	501801B	Packing, 1 unit
5	50181B	Fluid tip
6	50182B	Air distributor
7	50174MIXB	Fan regulation set
8	50193B	Needle
9	500111B	Joint, 4 units
10	50012B	Bushing
11	50195	Spring and product regulator
13	50015B	Valve
14	50016	Valve locking
15	50017	Valve kit
16+18	50430	Stud bolt + 2 seeger rings
17	50428B	Trigger joints
19	50427B	Trigger
20	501861B	Packing, 1 unit
21	501871B	Packing nut, 1 unit
22	50111B	Air inlet connector
23	50188B	Product inlet fitting
24	50189B	Product inlet tube
25	50191	Filter
26	50085	Nut and filter holder fitting
	50544	Joints kit

Aerográficos GAHE, S.A.  
Avda. Comunidad Europea, 83  
34190 Villamuriel de Cerrato  
Palencia - Spain

Tel.: (+34) 979 761 020  
e-mail: export@gahesa.com

www.gahesa.com